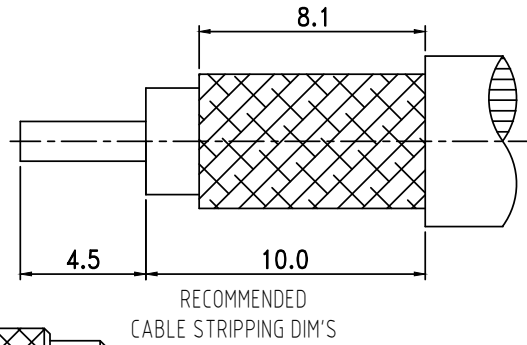
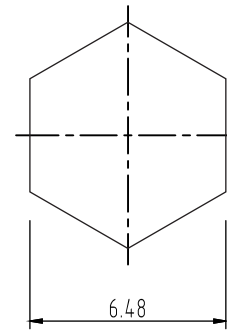


REVISION

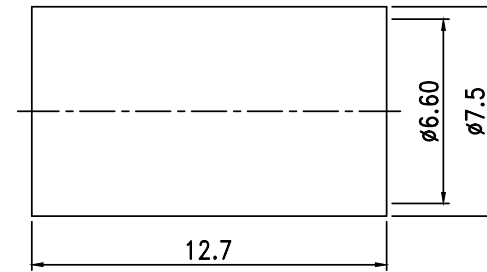
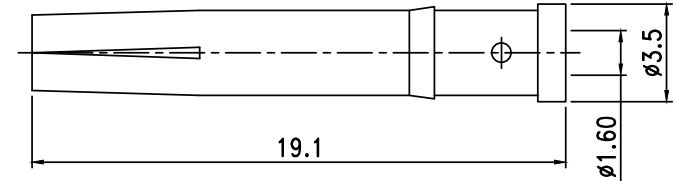
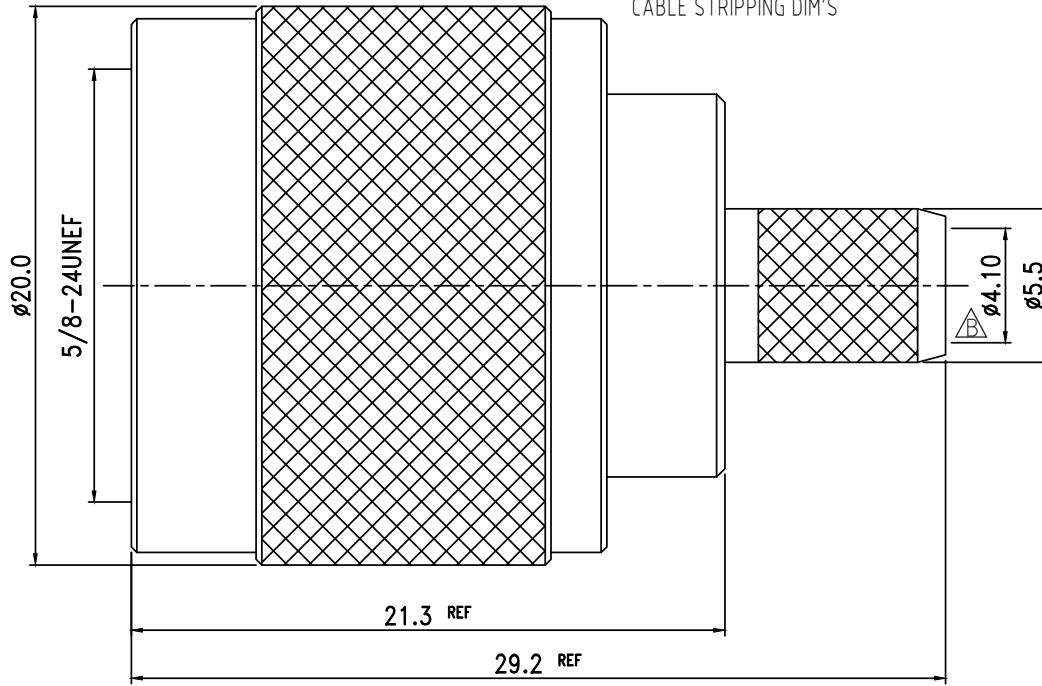
REV	DATE	DESCRIPTION
A	04/28/06	INITIAL
B	02/26/19	φ4.00 → φ4.10
C	02/26/19	Add Crimp Dims.



RECOMMENDED
CABLE STRIPPING DIM'S



RECOMMENDED
USE CRIMP TOOL DIE 0.255"



8.	Ferrule	Brass	1	Nickel
7.	Shell	Brass	1	Nickel
6.	Gasket	Si-Rubber	1	Red
5.	Retaining Ring	Brass	1	None
4.	Chassis	Brass	1	Nickel
3.	Insulation	PTFE	1	White
2.	Pin	Brass	1	Gold
1.	Body	Brass	1	Nickel
NO.	DESCRIPTION	MATERIAL	Q' TY	FINISH

TOLERANCE	
.X	+/- 0.2
.XX	+/- 0.1
.XXX	+/- 0.05
ANGLE	+/- 0.5

UNITS	SIZE
mm	A
SCALE	
NTS	
SHEET 1 OF 1	

DRAWN BY:	CHECKED BY:	APPROVED BY:	CAD FILE
			11-11L2-RP-TGN
<small>PROPRIETARY AND CONFIDENTIAL</small> THE INFORMATION IN THIS DRAWING IS THE SOLE PROPERTY OF TCC INDUSTRIES, INC. ANY REPRODUCTION IN PART OR AS A WHOLE WITHOUT THE WRITTEN PERMISSION OF TCC INDUSTRIES, INC. IS PROHIBITED.			

DESCRIPTION
N Male, Crimp, Straight Reverse Polarity for TCC Cable Group "L2"



TCC INDUSTRIES INC.

7050 Village Drive unit E, Buena Park, CA 90621-2282
 Tel. 714.523.8885 - FAX. 714.562.0888
 E-Mail: info@tccinc.com Website: www.tccinc.com